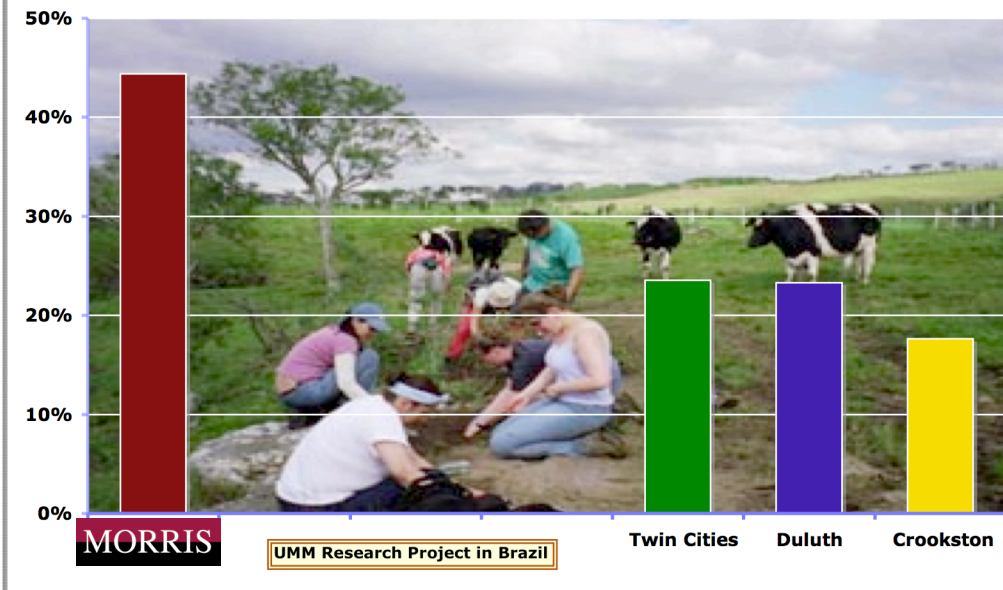


University of Minnesota, Morris

**2005 U of MN Graduating Senior Survey:
Students Working with Faculty on Research Projects**



Institutional Data Book 2005-2006

July 2006

INSTITUTIONAL DATA BOOK
UNIVERSITY OF MINNESOTA, MORRIS
2005-2006

Prepared by the
UMM Office of Institutional Research

July 2006

URL: <http://www.morris.umn.edu/academic/instres.html>

The University of Minnesota is an equal opportunity educator and employer.

TABLE OF CONTENTS

ORGANIZATIONAL STRUCTURE

UMM Organizational Chart as of August 2006. 1

FINANCIAL AND STAFFING INFORMATION

Most Recent Expenditures of General Operations and Maintenance Funds. 3

Proportion of Expenditures of General Operations and Maintenance Funds Devoted to the Academic
Divisions, Academic Support Services, and Administrative Services (Graphic). 4

Five-Year Summary of Total Expenditures of General Operations and Maintenance (O&M) Funds. 5

Five-Year Summary of Expenditures for Compensation from the General O&M Funds. 6

Five-Year Summary of Supplies, Expense, and Equipment Expenditures from the General O&M Funds. 7

Trends in Total Expenditures of General Operations and Maintenance Funds (Graphic). 8

Revenues and Expenditures from IPEDS Reports Supplied by Central Administration 9

Five-Year Summary of Financial Aid Distributed. 10

Tuition, Fees, Room and Board Rates. 11

Trends in Fund Raising and Endowment Growth. 12

Trends in Level of Funded Research. 13

Most Recent Academic, Civil Service, and Bargaining Unit Staffing. 14

Distribution of Faculty and Staff for 2005-2006 (Graphic). 15

Five-Year Summary of Academic, Civil Service, Bargaining Unit Staffing by Occupational Classification. 16

Five-Year Summary of Academic, Civil Service, and Bargaining Unit Staffing by Functional Unit. 17

Ten-Year Staffing Trends (Part 1) (Graphic). 18

Ten-Year Staffing Trends (Part 2) (Graphic) 19

STUDENT INFORMATION

Thirty-Year Summary of Enrollment, Aptitude, and Demographic Information for the UMM Student Body. 21

Comparison of the High School Ranks of Entering Freshmen from '05 to Five-Year Average (Graphic). 22

Comparison of Freshman ACT Composite Scores from '05 to Five-Year Average (Graphic) 23

Origin of the Fall 2005 Student Body (Graphic). 24

Five-Year Summary of Headcount Enrollment for the University of Minnesota System. 25

Fall Headcount Enrollments from 1960 to 2005 (Graphic). 26

STUDENT INFORMATION (Continued)

Five-Year Summary of Full-Year Equivalent Enrollment for the University of Minnesota System. 27
Consistency in Full-Year Equivalent and Headcount Enrollments (Graphic) 28
Five-Year Summary of Fall Headcount of Students of Color for the University of Minnesota System. 29
Five-Year Summary of UMM Fall Headcount by Ethnic Background. 30
Enrollment Projections for UMM. 31
Out-of-State and Foreign Student Enrollments. 32
UMM Student Study Abroad Enrollments. 33
Study Abroad as Percentage of Degrees Granted & Total Enrollment (Graphic). 34
Cohort Retention/Graduation Rates for UMM Entering Freshmen. 35
Cohort Retention and Graduation Rates (Graphic). 36
Type of Postbaccalaureate Training of UMM Graduates. 37
Occupational Level of UMM Graduates. 38

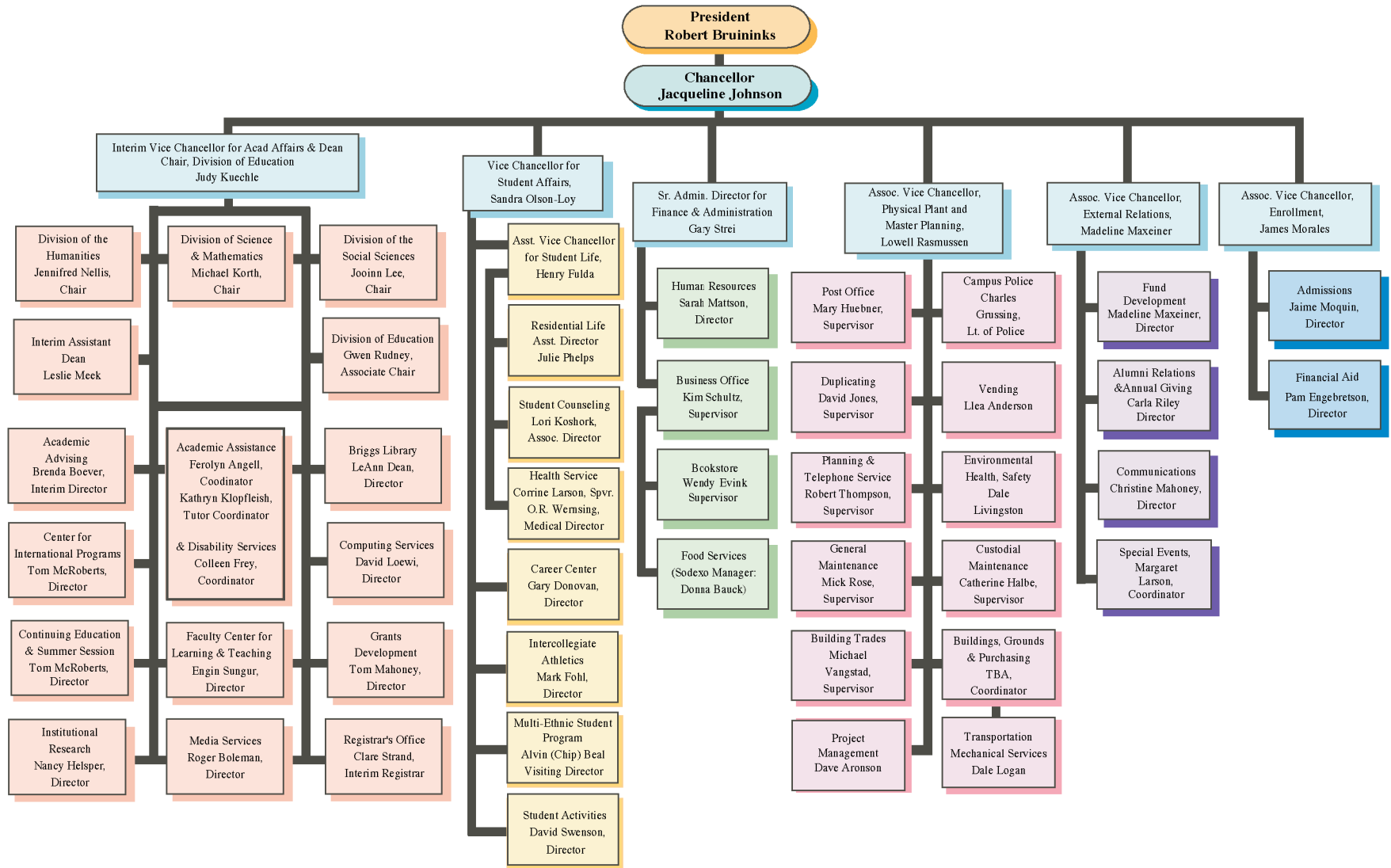
ACADEMIC PROGRAM INFORMATION

Five-Year Summary of Declared Majors of the UMM Student Body. 40-41
Distribution of Declared Majors, 2001 and 2005 (Graphic). 42
Five-Year Summary of Degrees Granted by Major. 43-44
Most Recent Student:Faculty Ratios by Division and Discipline. 45-46
Ten-Year Trend in Student Enrollments in Courses Offered by Each Academic Division (Graphic) 47
Ten-Year Trend in FTE Faculty at UMM by Division (Graphic). 48
Most Recent Statistics by Discipline on Enrollment, Classes, and Faculty. 49-50
Faculty Line Items and FTE Teaching Positions, 2000 to 2006. 51
FTE and Line Faculty Positions by Division from 1996 to 2006 (Graphic). 52
Five-Year Summary of Average Salary for Full-Time Teaching Faculty by Rank and Sex. 53
Percent of Faculty Who are Female, Minority, or Tenured. 54
Percentage of Total Faculty Who are Tenured, Women, or Minority (Graphic). 55

INDEX. 56

(August 1, 2006)

Administrative Organization University of Minnesota, Morris



FINANCIAL AND STAFFING INFORMATION

Information is provided on the expenditure of the general operations and maintenance fund and any legislative special appropriations for that particular year. The table shows actual expenditures, a more accurate financial indicator than the printed budget. Five-year summaries of that same information are also provided showing the total amount and separate summaries for compensation and supplies, expense, and equipment expenditures. It should be noted that the financial information may show only a rough correspondence to that provided by the central administration for the University as a whole because of differences in methods of collection and aggregation of the data. Revenue and expenditure data from the most recent IPEDS reports prepared by the central administration is also included. The financial charts show that while, over the past five years, total college expenditures have risen substantially, the increase is almost entirely the result of normal salary increases with little increase in supplies, expense, and equipment expenditures. The pie diagram indicates the proportion of expenditures most directly related to the academic program as against those for administrative support.

Financial aid information for the past five years shows the actual distribution of aid including the number of eligible recipients and the average award per student. The information comes from the annual report from the Financial Aid Office. A table showing trends in tuition, fees, room and board is included.

Two new financial tables were added this year. The first table shows fund raising and endowment growth from 1995 to 2005. Endowment values have increased 222% over the past ten years with commitments averaging \$1,046,881 per year. The second table shows trends in the level of funded research at UMM. Over the past four years, funded research has averaged 14 awards annually for a total of \$609,805 per year.

Staffing counts include part-time, temporary staff, but do not include student employment. Teaching faculty are shown under the category of "Instruction and Research," but there are additional administrative faculty appearing under the categories of "Academic Affairs," "Executive Management," and "Support Professionals." Due to institutional reorganization, it was determined that Continuing Education staff and instructional effort needed to be counted as part of overall institutional activity. Beginning in 2003-04, Continuing Education staff and day school instructors were counted; beginning in 2004-05, all Continuing Education staff and instructional efforts were counted. The reader is encouraged to study the definitions on the tables in order to understand which units are included under each of the categories shown. The information in the five-year summaries is broken down, first, by occupational classification and, secondly, by the principal function performed by the employees.

