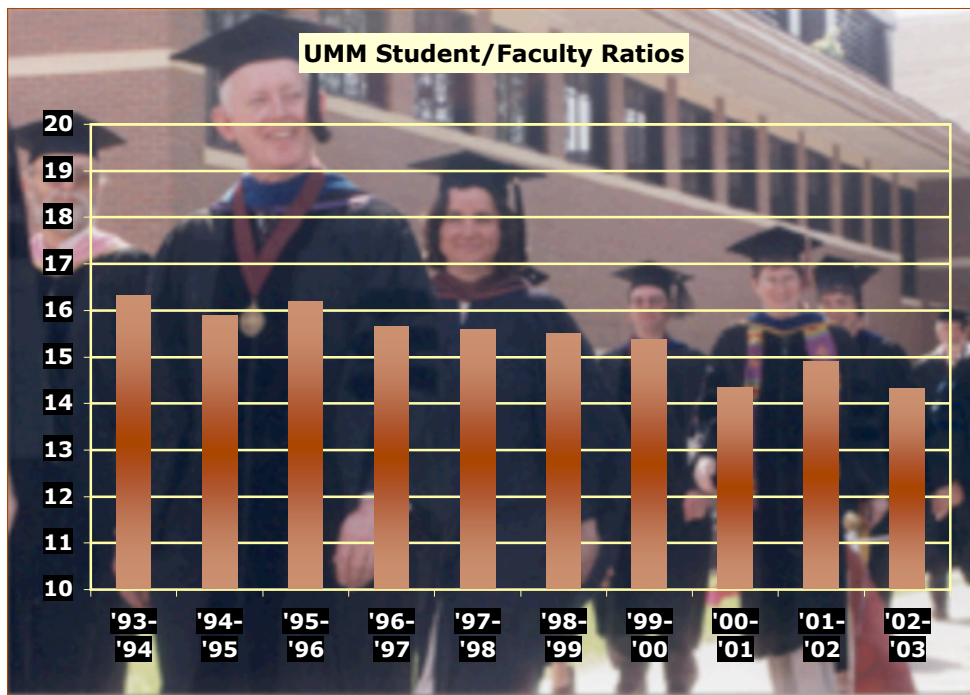


University of Minnesota, Morris



Institutional Data Book

2003-2004

May 2004

INSTITUTIONAL DATA BOOK
UNIVERSITY OF MINNESOTA, MORRIS
2003-2004

Prepared by the
UMM Office of Institutional Research

May 2004

URL: <http://www.mrs.umn.edu/academic/instres.html>

The University of Minnesota is an equal opportunity educator and employer.

TABLE OF CONTENTS

ORGANIZATIONAL STRUCTURE

UMM Organizational Chart as of January 2003. 1

FINANCIAL AND STAFFING INFORMATION

Most Recent Expenditures of General Operations and Maintenance Funds. 3

Proportion of Expenditures of General Operations and Maintenance Funds Devoted to the Academic Divisions,
Academic Support Services, and Administrative Services (Graphic). 4

Five-Year Summary of Total Expenditures of General Operations and Maintenance Funds. 5

Five-Year Summary of Expenditures for Compensation from the General Operations and Maintenance Funds. 6

Five-Year Summary of Supplies, Expense, and Equipment Expenditures from the General Operations and Maintenance Funds. 7

Trends in Total Expenditures of General Operations and Maintenance Funds (Graphic). 8

Revenues and Expenditures from IPEDS Reports Supplied by Central Administration 9

Five-Year Summary of Financial Aid Distributed. 10

Tuition, Fees, Room and Board Rates. 11

Most Recent Academic, Civil Service, and Bargaining Unit Staffing. 12

Distribution of Faculty and Staff for 2003-2004 (Graphic). 13

Five-Year Summary of Academic, Civil Service, Bargaining Unit Staffing by Occupational Classification. 14

Five-Year Summary of Academic, Civil Service, and Bargaining Unit Staffing by Functional Unit. 15

Ten-Year Staffing Trends (Part 1) (Graphic). 16

Ten-Year Staffing Trends (Part 2) (Graphic) 17

STUDENT INFORMATION

Thirty-Year Summary of Enrollment, Aptitude, and Demographic Information for the UMM Student Body. 19

Change in the High School Ranks of Entering Freshmen from '99 to '03 (Graphic). 20

Change in Freshman ACT Composite Scores from '99 to '03 (Graphic) 21

Origin of the Fall 2003 Student Body (Graphic). 22

Five-Year Summary of Headcount Enrollment for the University of Minnesota System. 23

Fall Headcount Enrollments from 1960 to 2003 (Graphic). 24

Five-Year Summary of Full-Year-Equivalent Enrollment for the University of Minnesota System. 25

STUDENT INFORMATION (Continued)

Consistency in FYE and Headcount Enrollments (Graphic) 26

Five-Year Summary of Fall Headcount of Minority Student Enrollment for the University of Minnesota System. 27

Enrollment Projections for UMM. 28

Out-of-State and Foreign Student Enrollments. 29

UMM Student Study Abroad Enrollments. 30

Study Abroad as Percentage of Degrees Granted & Total Enrollment (Graphic). 31

Cohort Retention/Graduation Rates for UMM Entering Freshmen. 32

Cohort Retention and Graduation Rates (Graphic). 33

Type of Postbaccalaureate Training of UMM Graduates. 34

Occupational Level of UMM Graduates. 35

ACADEMIC PROGRAM INFORMATION

Five-Year Summary of Declared Majors of the UMM Student Body. 37-38

Distribution of Declared Majors, 1999 and 2003 (Graphic). 39

Five-Year Summary of Degrees Granted by Major. 40-41

Most Recent Student:Faculty Ratios by Division and Discipline. 42-43

Ten-Year Trend in Student Enrollments in Courses Offered by Each Academic Division (Graphic) 44

Ten-Year Trend in FTE Faculty at UMM by Division (Graphic). 45

Most Recent Statistics by Discipline on Enrollment, Classes, and Faculty. 46-47

Faculty Line Items and FTE Teaching Positions, 1998 to 2004. 48

FTE and Line Faculty Positions by Division from 1994 to 2004 (Graphic). 49

Five-Year Summary of Average Salary for Full-Time Teaching Faculty by Rank and Sex. 50

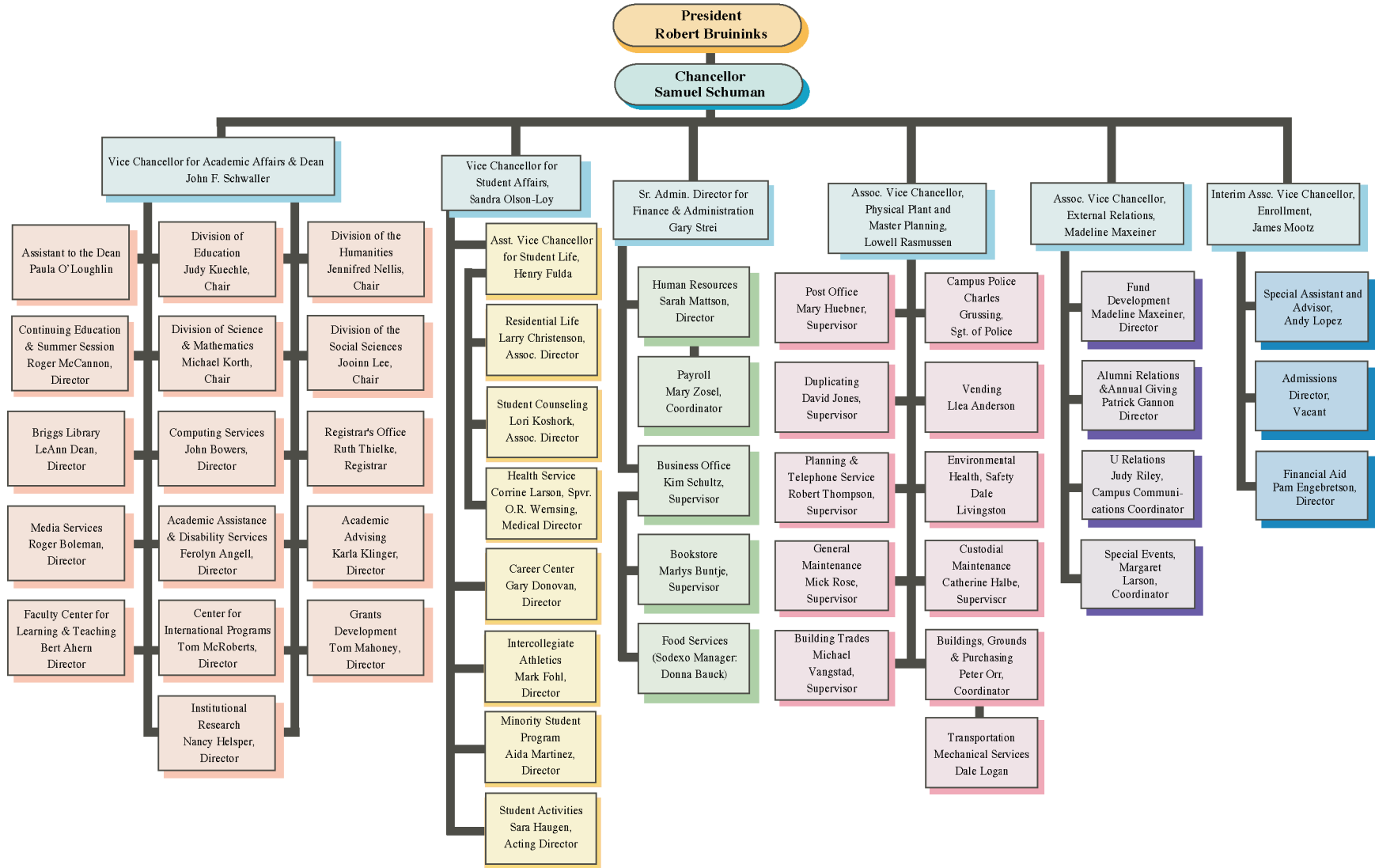
Percent of Faculty Who are Female, Minority, or Tenured. 51

Percentage of Total Faculty Who are Tenured, Women, or Minority (Graphic). 52

INDEX. 53

(January 2004)

Administrative Organization University of Minnesota, Morris



FINANCIAL AND STAFFING INFORMATION

Information is provided on the expenditure of the general operations and maintenance fund and any legislative special appropriations for that particular year. The table shows actual expenditures, a more accurate financial indicator than the printed budget. Five-year summaries of that same information are also provided showing the total amount and separate summaries for compensation and supplies, expense, and equipment expenditures. It should be noted that the financial information may show only a rough correspondence to that provided by the central administration for the University as a whole because of differences in methods of collection and aggregation of the data. Revenue and expenditure data from the most recent IPEDS reports prepared by the central administration is also included. The financial charts show that while, over the past five years, total college expenditures have risen substantially, the increase is almost entirely the result of normal salary increases with little increase in supplies, expense, and equipment expenditures. The pie diagram indicates the proportion of expenditures most directly related to the academic program as against those for administrative support.

Financial aid information for the past five years shows the actual distribution of aid including the number of eligible recipients and the average award per student. The information comes from the annual report from the Financial Aid Office. A table showing trends in tuition, fees, room and board is included.

Staffing counts include part-time, temporary staff, but do not include student employment. Teaching faculty are shown under the category of "Instruction and Research," but there are additional administrative faculty appearing under the categories of "Academic Support," "Executive Management," and "Support Professionals." The reader is encouraged to study the definitions on the tables in order to understand which units are included under each of the categories shown. The information in the five-year summaries is broken down, first, by occupational classification and, secondly, by the principal function performed by the employees. The charts on staffing trends show that while there were small increases in staffing levels and some shifts of employees from one unit to another, total staffing has remained relatively stable for the past five years.

University of Minnesota, Morris
2002-2003 Expenditures from the General Operations and Maintenance Fund
and State Legislative Special Appropriations

1002 Expenditures 2002-03
--

Item	Salaries	Fringe Benefits	SE&E	Total
SUPPORT SERVICES				
Administration	\$971,960	\$295,533	\$386,857	\$1,654,350
Student Services	\$1,485,453	\$383,268	\$1,850,508	\$3,719,229
Intercollegiate Athletics	\$398,221	\$102,153	\$449,389	\$949,763
Plant Services	\$2,115,046	\$612,147	\$1,358,028	\$4,085,221
	<u>\$4,970,680</u>	<u>\$1,393,101</u>	<u>\$4,044,782</u>	<u>\$10,408,563</u>
ACADEMIC SERVICES				
Administration	\$866,373	\$255,286	\$177,930	\$1,299,589
Computing Services	\$462,891	\$144,249	\$155,637	\$762,777
Continuing Education-Morris	\$635,789	\$110,356	\$369,126	\$1,115,271
Library/Media Services	\$546,696	\$166,675	\$462,993	\$1,176,364
	<u>\$2,511,749</u>	<u>\$676,566</u>	<u>\$1,165,686</u>	<u>\$4,354,001</u>
ACADEMIC DIVISIONS				
Interdisciplinary & General	\$259,526	\$49,956	\$141,863	\$451,345
Education	\$670,272	\$185,743	\$37,506	\$893,521
Humanities	\$2,357,671	\$703,249	\$135,660	\$3,196,580
Science & Math	\$2,272,335	\$669,265	\$171,675	\$3,113,275
Social Sciences	\$1,968,263	\$611,220	\$53,557	\$2,633,040
	<u>\$7,528,067</u>	<u>\$2,219,433</u>	<u>\$540,261</u>	<u>\$10,287,761</u>
GRAND TOTALS	\$15,010,496	\$4,289,100	\$5,750,729	\$25,050,325
Tuition & Fees				\$10,442,608
Tuition Grants				(\$846,985)
NET COLLECTIONS				<u>\$9,595,623</u>
NET TAX FUNDS USED				\$14,607,717

--Support Services Administration includes Chancellor's Office, University Relations, Business Office, VC Finance, Security (included with Plant beginning 1996-97), and Post Office.

--Academic Services Administration includes Vice Chancellor for Academic Affairs Office.

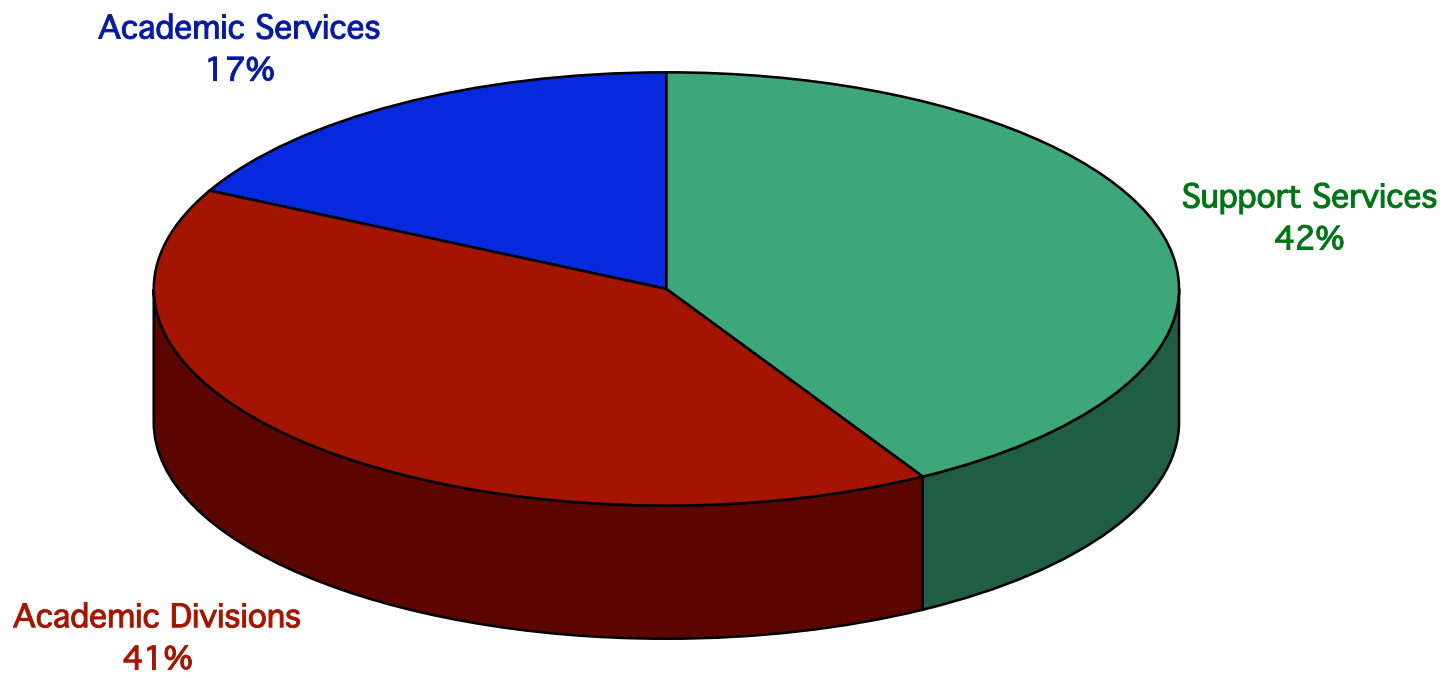
--Continuing Education items are from a University-wide source, not part of the UMM budget base.

--Academic Divisions Interdisciplinary and General item includes unassigned instruction from all four Divisions, Educational Development Program, Interdisciplinary courses, faculty recruiting and travel support.

--Tuition and Fees includes the gross Tuition to be collected and also includes Continuing Education evening and day school tuition.

--Tuition Grants includes all waivers issued to students who attend UMM.

Total Expenditures from the O&M Fund for 2002-2003



University of Minnesota, Morris
A Five-Year Summary of Total Expenditures from the
General Operations and Maintenance Fund and
State Legislative Special Appropriations

Total Expenditures 1998-03

	1998-99	1999-2000	2000-2001	2001-2002	2002-2003
SUPPORT SERVICES					
Administration	\$1,126,674	\$1,212,145	\$1,695,385	\$1,954,546	\$1,654,350
Student Services	\$3,194,199	\$3,251,869	\$3,490,392	\$3,863,765	\$3,719,229
Inter. Athletics	\$659,384	\$674,184	\$812,921	\$876,859	\$949,763
Plant Services	\$3,186,478	\$3,535,807	\$3,966,075	\$3,996,291	\$4,085,221
	<u>\$8,166,735</u>	<u>\$8,674,005</u>	<u>\$9,964,773</u>	<u>\$10,691,461</u>	<u>\$10,408,563</u>
ACADEMIC SERVICES					
Administration	\$694,959	\$733,376	\$692,336	\$902,100	\$1,299,589
Computing Services	\$475,481	\$543,782	\$697,296	\$661,057	\$762,777
Continuing Ed-Morris	\$751,235	\$850,196	\$794,127	\$939,962	\$1,115,271
Library/Media Services	\$1,025,681	\$1,124,436	\$1,166,341	\$1,144,400	\$1,176,364
	<u>\$2,947,356</u>	<u>\$3,251,790</u>	<u>\$3,350,100</u>	<u>\$3,647,519</u>	<u>\$4,354,001</u>
ACADEMIC DIVISIONS					
Interdisc. & General	\$370,586	\$487,531	\$407,732	\$393,569	\$451,345
Education	\$669,536	\$723,701	\$761,207	\$789,441	\$893,521
Humanities	\$2,784,922	\$2,961,178	\$3,081,514	\$2,990,032	\$3,196,580
Science & Math	\$2,443,049	\$2,681,868	\$2,862,071	\$2,881,076	\$3,113,275
Social Sciences	\$2,142,917	\$2,263,192	\$2,293,548	\$2,453,474	\$2,633,040
	<u>\$8,411,010</u>	<u>\$9,117,470</u>	<u>\$9,406,072</u>	<u>\$9,507,592</u>	<u>\$10,287,761</u>
GRAND TOTALS	\$19,525,101	\$21,043,265	\$22,720,945	\$23,846,572	\$25,050,325

--Support Services Administration includes Chancellor's Office, University Relations, Business Office, VC Finance, Security (included with Plant beginning 1996-97), and Post Office.

--Academic Services Administration includes Vice Chancellor for Academic Affairs Office.

--Continuing Education items are from a University-wide source, not part of the UMM budget base.

--Academic Divisions Interdisciplinary and General item includes unassigned instruction from all four Divisions, Educational Development Program, Interdisciplinary courses, faculty recruiting and travel support.

University of Minnesota, Morris
A Five-Year Summary of Expenditures for Compensation from the
General Operations and Maintenance Fund and State Legislative Special Appropriations

Compensation

	1998-99	1999-00	2000-01	2001-02	2002-03
SUPPORT SERVICES					
Administration	\$901,190	\$912,798	\$1,236,688	\$1,331,795	\$1,267,493
Student Services	\$1,732,728	\$1,826,061	\$2,093,231	\$2,116,589	\$1,868,721
Inter. Athletics	\$345,921	\$371,789	\$424,891	\$451,482	\$500,374
Plant Services	<u>\$2,077,429</u>	<u>\$2,250,256</u>	<u>\$2,467,719</u>	<u>\$2,662,238</u>	<u>\$2,727,193</u>
	\$5,057,268	\$5,360,904	\$6,222,529	\$6,562,104	\$6,363,781
ACADEMIC SERVICES					
Administration	\$618,143 *	\$635,884	\$577,023	\$760,947	\$1,121,659
Computing Services	\$400,548	\$433,518	\$517,169	\$549,293	\$607,140
Continuing Ed-Morris	\$495,275	\$569,493	\$550,905	\$671,657	\$746,145
Library/Media Services	<u>\$602,254</u>	<u>\$625,466</u>	<u>\$603,424</u>	<u>\$655,159</u>	<u>\$713,371</u>
	\$2,116,220	\$2,264,361	\$2,248,521	\$2,637,056	\$3,188,315
ACADEMIC DIVISIONS					
Interdisc. & General	\$240,571 **	\$287,542	\$231,800	\$212,614	\$309,482
Education	\$635,899	\$666,575	\$704,229	\$747,632	\$856,015
Humanities	\$2,657,948	\$2,736,844	\$2,860,633	\$2,819,888	\$3,060,920
Science & Math	\$2,260,393	\$2,374,061	\$2,616,182	\$2,697,297	\$2,941,600
Social Sciences	<u>\$2,080,917</u>	<u>\$2,186,022</u>	<u>\$2,218,167</u>	<u>\$2,399,399</u>	<u>\$2,579,483</u>
	\$7,875,728	\$8,251,044	\$8,631,011	\$8,876,830	\$9,747,500
GRAND TOTALS	\$15,049,216	\$15,876,309	\$16,551,156	\$18,075,990	\$19,299,596

--Support Services Administration includes Chancellor's Office, University Relations, Business Office, VC Finance, Security (included with Plant beginning 1996-97), and Post Office.

--Academic Services Administration includes Vice Chancellor for Academic Affairs Office.

--Continuing Education items are from a University-wide source, not part of the UMM budget base.

--Academic Divisions Interdisciplinary and General item includes unassigned instruction from all four Divisions, Educational Development Program, Interdisciplinary courses, faculty recruiting and travel support.

*Reflects new Center for Small Towns budget. **Includes Summer Session salaries.

University of Minnesota, Morris
A Five-Year Summary of Supplies, Expense, and Equipment Expenditures from the
General Operations and Maintenance Fund and State Legislative Special Appropriations

SE&E

	1998-99	1999-00	2000-01	2001-02	2002-03
SUPPORT SERVICES					
Administration	\$225,484	\$299,347	\$458,697	\$622,751	\$386,857
Student Services	\$1,461,471	\$1,425,808	\$1,397,161	\$1,747,176	\$1,850,508
Inter. Athletics	\$313,463	\$302,395	\$388,030	\$425,377	\$449,389
Plant Services	<u>\$1,109,049</u>	<u>\$1,285,551</u>	<u>\$1,498,356</u>	<u>\$1,334,053</u>	<u>\$1,358,028</u>
	<u>\$3,109,467</u>	<u>\$3,313,101</u>	<u>\$3,742,244</u>	<u>\$4,129,357</u>	<u>\$4,044,782</u>
ACADEMIC SERVICES					
Administration	\$76,816 *	\$97,492	\$115,313	\$141,153	\$177,930
Computing Services	\$74,933	\$110,264	\$180,127	\$111,764	\$155,637
Continuing Ed-Morris	\$255,960	\$280,703	\$243,222	\$268,305	\$369,126
Library/Media Services	<u>\$423,427</u>	<u>\$498,970</u>	<u>\$562,917</u>	<u>\$489,241</u>	<u>\$462,993</u>
	<u>\$831,136</u>	<u>\$987,429</u>	<u>\$858,357</u>	<u>\$1,010,463</u>	<u>\$1,165,686</u>
ACADEMIC DIVISIONS					
Interdisc. & General	\$130,015	\$199,989	\$175,932	\$180,955	\$141,863
Education	\$33,637	\$57,126	\$56,978	\$41,809	\$37,506
Humanities	\$126,974	\$224,334	\$220,881	\$170,144	\$135,660
Science & Math	\$182,656	\$307,807	\$245,889	\$183,779	\$171,675
Social Sciences	<u>\$62,000</u>	<u>\$77,170</u>	<u>\$75,381</u>	<u>\$54,075</u>	<u>\$53,557</u>
	<u>\$535,282</u>	<u>\$866,426</u>	<u>\$775,061</u>	<u>\$630,762</u>	<u>\$540,261</u>
GRAND TOTALS	\$4,475,885	\$5,166,956	\$5,375,662	\$5,770,582	\$5,750,729

--Support Services Administration includes Chancellor's Office, University Relations, Business Office, VC Finance, Security (included with Plant beginning 1996-97), and Post Office.

--Academic Services Administration includes Vice Chancellor for Academic Affairs Office.

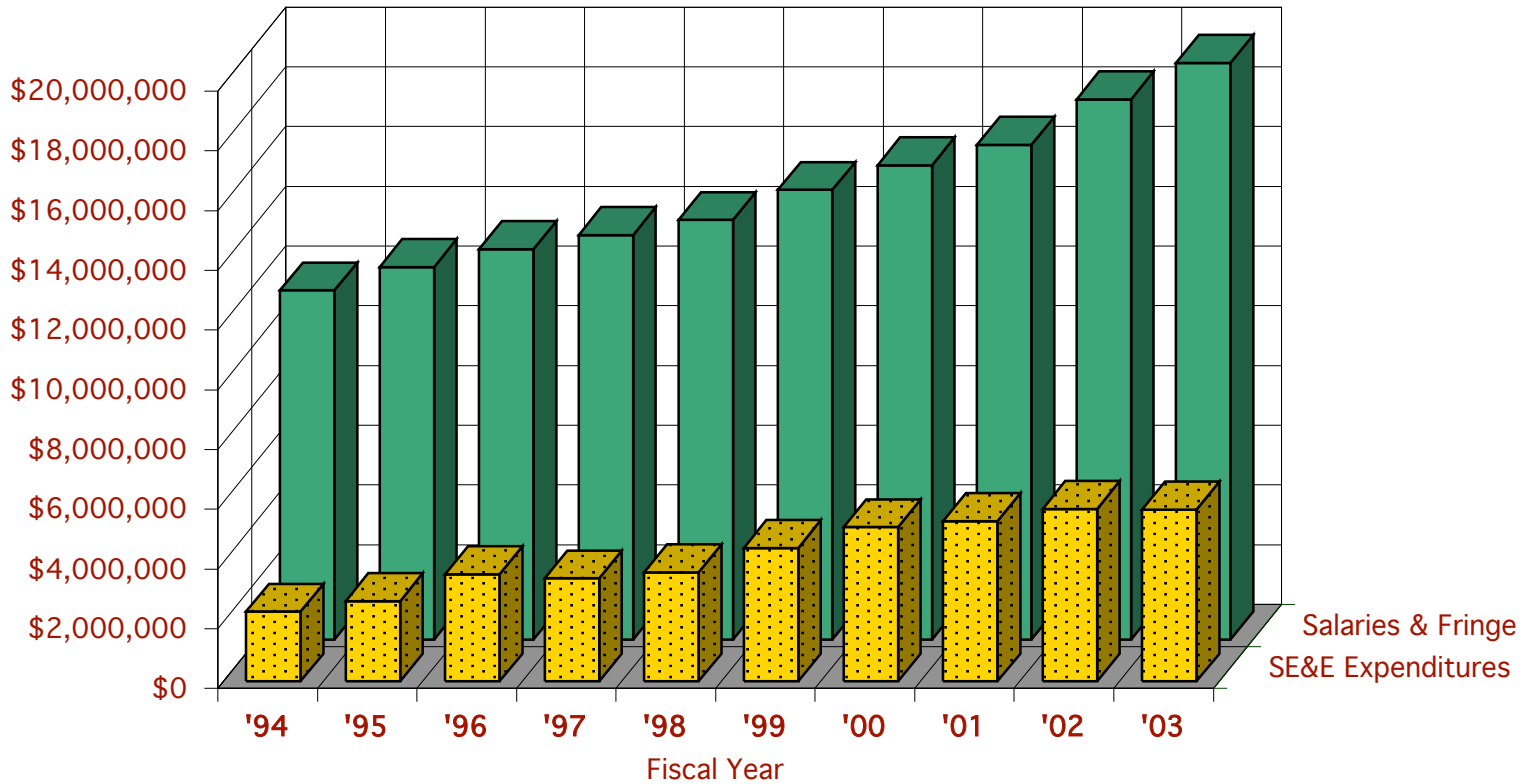
--Continuing Education items are from a University-wide source, not part of the UMM budget base.

--Academic Divisions Interdisciplinary and General item includes unassigned instruction from all four Divisions, Educational Development Program, Interdisciplinary courses, faculty recruiting and travel support.

*Reflects new Center for Small Towns budget.

UMM Expenditures, O&M Fund

■ SE&E Expenditures ■ Salaries & Fringe



University of Minnesota, Morris Revenues and Expenditures
From IPEDS Reports Supplied by Central Administration

IPEDS Financial Data

		Fourth FY Prior 1998-99	Third FY Prior 1999-2000	Second FY Prior 2000-2001	First FY Prior 2001-2002	Last Completed FY 2002-2003
REVENUES						
	Tuition and fees	\$7,343,494	\$7,328,740	\$7,559,362	\$8,377,560	\$9,627,980
	Federal appropriations	\$0	\$0	\$0	\$0	\$0
	State appropriations	\$11,237,481	\$11,905,177	\$12,967,411	\$14,438,996	\$15,080,605
	Local appropriations	\$0	\$0	\$0	\$0	\$0
	Grants and contracts	\$5,486,689	\$4,493,919	\$5,139,024	\$4,788,512	\$4,632,997
	Endowment income	\$61,151	\$84,569	\$92,783	\$191,383	\$448,972
	Sales & services of educational activities	\$186,120	\$232,394	\$215,796	\$147,454	\$173,352
	Auxiliary enterprises	\$5,420,078	\$5,367,119	\$5,760,148	\$6,287,844	\$6,213,444
	Other	\$187,989	\$198,297	\$105,855	\$274,489	\$269,384
Total Revenues		\$29,923,002	\$29,610,215	\$31,840,379	\$34,506,238	\$36,446,734
EDUCATIONAL & GENERAL EXPENDITURES AND TRANSFERS						
Educational and General	Instruction	\$8,110,268	\$8,782,054	\$9,443,724	\$9,357,152	\$10,160,662
	Research	\$208,013	\$186,326	\$129,235	\$86,320	\$64,915
	Public services	\$323,876	\$521,301	\$527,982	\$696,214	\$728,551
	Academic support	\$2,621,971	\$3,079,818	\$3,427,132	\$3,066,797	\$3,744,972
	includes Library expenditures:	\$858,438	NA	NA	NA	NA
	Student services	\$3,178,571	\$3,296,084	\$3,882,802	\$3,639,132	\$3,150,536
	Institutional support	\$1,471,476	\$1,865,335	\$2,619,347	\$2,016,886	\$1,796,079
	Operation & maintenance of plant	\$3,001,606	\$3,534,325	\$3,636,872	\$3,939,150	\$4,353,857
	Scholarships and fellowships	\$4,974,324	\$4,613,712	\$4,441,521	\$4,989,048	\$5,594,535
	Non-mandatory transfers	(\$939,299)	(\$1,354,452)	(\$1,044,425)	\$0	\$0
Mandatory transfers	\$100,235	\$95,447	\$8,249	\$0	\$0	
Total Educational and General		\$23,051,041	\$24,619,950	\$27,072,439	\$27,790,699	\$29,594,107
AUXILIARY ENTERPRISES						
Auxiliary Enterprises	Expenditures	\$5,211,679	\$5,337,345	\$5,720,870	\$6,058,400	\$6,446,602
	Mandatory transfer	\$194,317	\$0	\$0	\$0	\$0
	Nonmandatory transfer	\$159,776	\$532,453	(\$127,310)	\$0	\$0
Total Auxiliary Enterprises		\$5,565,772	\$5,869,798	\$5,593,560	\$6,058,400	\$6,446,602
HOSPITALS		\$0	\$0	\$0	\$0	\$0
INDEPENDENT OPERATIONS		\$0	\$0	\$0	\$0	\$0
TOTAL CURRENT FUNDS EXPENDITURES AND TRANSFERS		\$28,616,813	\$30,489,748	\$32,665,999	\$33,849,099	\$36,040,709

University of Minnesota, Morris
A Five-Year Summary of Financial Aid Distributed

Financial Aid

	Amount Distributed				
	1998-99	1999-00	2000-01	2001-02	2002-03
MN State Scholarships/Grants	\$1,701,318	\$1,564,991	\$1,600,623	\$1,665,645	\$1,850,231
U of M Scholarships/Grants	\$1,581,378	\$1,409,105	\$1,235,604	\$1,746,304	\$1,881,970
Outside Scholarships/Grants	\$977,159	\$881,394	\$924,826	\$1,042,683	\$1,124,508
PELL Grants	\$1,230,413	\$1,168,932	\$1,264,360	\$1,349,412	\$1,438,014
SEOG Grants	\$656,243	\$657,715	\$656,052	\$656,052	\$656,052
Veteran's	\$95,340	\$89,573	\$99,269	\$85,920	\$104,953
Morris Acad. Partners/Admin. Internships	\$110,500	\$102,375	\$106,250	\$107,000	\$111,600
Minority Mentorship Program	\$11,666	\$11,000	\$10,000	\$11,500	\$11,000
TOTAL GRANTS	\$6,364,017	\$5,885,085	\$5,896,984	\$6,664,516	\$7,178,328
FED/DIR Subsidized/Unsub Loans	\$4,144,201	\$4,121,492	\$4,535,130	\$4,857,320	\$5,197,007
SELF Loans	\$1,343,906	\$1,654,393	\$1,510,696	\$1,754,307	\$1,861,075
Perkins Loans	\$191,639	\$241,591	\$359,748	\$203,003	\$383,366
PLUS Loans	\$12,200	\$7,100	\$24,700	\$47,002	\$87,542
Other Loans	\$15,133	\$14,800	\$52,980	\$34,750	\$156,444
TOTAL LOANS	\$5,707,079	\$6,039,376	\$6,483,254	\$6,896,382	\$7,685,434
Federal Work-Study	\$414,458	\$383,513	\$322,375	\$388,833	\$443,604
State Work-Study	\$193,333	\$263,729	\$392,133	\$358,065	\$0
Other U of M Employment	\$169,768	\$145,455	\$222,567	\$254,499	\$361,638
TOTAL EMPLOYMENT	\$777,559	\$792,697	\$937,075	\$1,001,397	\$805,242
GRAND TOTALS	\$12,848,655	\$12,717,158	\$13,317,313	\$14,562,295	\$15,669,004
Unduplicated Recipients	1,786	1,681	1,796	1,581	1,946
Percentage of Student Body Receiving Aid	93%	90%	98%	82%	90%
Average Aid Per Student	\$7,194	\$7,565	\$7,415	\$9,211	\$8,052
Cost of Resident Tuition/Fees/Rm/Bd	\$8,880	\$9,222	\$9,669	\$10,716	\$11,838

University of Minnesota, Morris
A Summary of Tuition, Fees, Room and Board Rates

Tuition Costs

	1994-95	1995-96	1996-97	1997-98	1998-99	1999-00**	2000-01	2001-02	2002-03	2003-04
<u>RATES PER TERM</u>										
<i>Resident per credit tuition</i>	\$77.70	\$83.75	\$89.20	\$93.90	\$98.00	\$159.25	\$167.75	\$184.95	\$212.70	\$230.35
Lower Division										
Upper Division										
<i>Mandatory fees</i>										
Technology	--	--	--	\$35.00	\$35.00	\$52.50	\$52.50	\$52.50	\$52.50	\$52.50
Health Service	\$30.00	\$35.00	\$35.00	\$35.00	\$35.00	\$52.50	\$52.50	\$52.50	\$52.50	\$52.50
Activities	\$49.00	\$51.00	\$51.00	\$51.00	\$51.00	\$78.00	\$78.00	\$85.00	\$85.00	\$90.00
Student Center	\$24.00	\$24.00	\$24.00	\$24.00	\$24.00	\$39.00	\$39.00	\$39.00	\$39.00	\$39.00
Intercollegiate Athletics University			\$10.00	\$10.00	\$10.00	\$15.00	\$15.00	\$15.00	\$15.00	\$15.00
Regional Fitness Center								\$75.00	\$150.00	\$300.00
Total	<u>\$103.00</u>	<u>\$110.00</u>	<u>\$120.00</u>	<u>\$155.00</u>	<u>\$155.00</u>	<u>\$267.00</u>	<u>\$267.00</u>	<u>\$349.00</u>	<u>\$439.00</u>	<u>\$594.00</u>
<i>Room charges:</i>										
Dorm - double room	\$487.00	\$538.00	\$558.00	\$578.00	\$593.00	\$915.00	\$956.00	\$1,040.00	\$1,100.00	\$1,130.00
Apartments - double room	\$606.00	\$657.00	\$660.00	\$665.00	\$680.00	\$1,050.00	\$1,100.00	\$1,190.00	\$1,250.00	\$1,285.00
<i>19-meal plan</i>	\$610.00	\$620.00	\$640.00	\$660.00	\$680.00	\$1,040.00	\$1,095.00	\$1,170.00	\$1,190.00	\$1,270.00
<u>ANNUAL RATES</u>										
Resident tuition (15-20 cr/term)	\$3,496.50	\$3,858.75	\$4,194.00	\$4,405.50	\$4,596.00	\$4,777.50	\$5,032.50	\$5,548.50	\$6,381.00	\$6,907.50
Mandatory fees	\$309.00	\$330.00	\$360.00	\$465.00	\$465.00	\$534.00	\$534.00	\$698.00	\$878.00	\$1,188.00
<i>Room and board*</i>	<u>\$3,291.00</u>	<u>\$3,474.00</u>	<u>\$3,594.00</u>	<u>\$3,714.00</u>	<u>\$3,819.00</u>	<u>\$3,910.00</u>	<u>\$4,102.00</u>	<u>\$4,470.00</u>	<u>\$4,580.00</u>	<u>\$4,800.00</u>
<i>Comprehensive cost</i>	\$7,096.50	\$7,662.75	\$8,148.00	\$8,584.50	\$8,880.00	\$9,221.50	\$9,668.50	\$10,716.50	\$11,839.00	\$12,895.50
	<u>'93 to '94</u>	<u>'94 to '95</u>	<u>'95 to '96</u>	<u>'96 to '97</u>	<u>'97 to '98</u>	<u>'98 to '99</u>	<u>'99 to '00</u>	<u>'00 to '01</u>	<u>'01 to '02</u>	<u>'02 to '03</u>
% Increase in annual tuition	5.0%	10.4%	8.7%	5.0%	4.3%	3.9%	5.3%	10.3%	15.0%	8.3%
% Increase in comprehensive cost	4.3%	8.0%	6.3%	5.4%	3.4%	3.8%	4.8%	10.8%	10.5%	8.9%

*Based on rates for double room in a dorm plus 19-meal plan.

**First year on semesters (2 terms/year) rather than quarters (3 terms/year).

University of Minnesota, Morris
Academic, Civil Service, and Bargaining Unit Staffing
for 2003-04

Staffing by Dept. 2003-04

	Instruction and Research	Academic Support	Chancellor's Office	Intercol. Athletics	Student Services	Business Services	Plant Services	Auxiliary Enterprises	Total
Teaching Faculty	125.2	1.5	-	5.5	-	-	-	-	132.2
Executive Management	-	1.0	2.0	-	1.0	1.0	1.0	-	6.0
Support Professionals	-	19.0	2.0	7.6	22.5	3.2	3.4	1.0	58.6
Technical Employees	-	14.8	-	-	0.5	-	3.0	3.0	21.3
Office/Clerical	-	37.1	6.8	1.0	18.7	5.8	6.1	7.4	82.6
Crafts/Trades	-	-	-	-	-	-	17.0	-	17.0
Service Employees	-	-	-	-	-	-	21.6	29.8	51.4
Total	125.2	73.3	10.8	14.1	42.6	9.9	52.0	41.2	369.0

Definitions:

--Instruction and Research includes the academic Divisions and, beginning with 2003-04, includes Continuing Education instructors. The Division Chairs are counted as 0.5 under Instruction and Research and 0.5 under Academic Support. Faculty with athletic responsibilities are counted as 0.5 under Instruction and research and 0.5 under Intercollegiate Athletics.

--Academic Support includes the Vice Chancellor's Office, Library, Media Services, Academic Assistance, Computing Services, Registrar's Office, Continuing Education (beginning with 2003-04), Grants Development, and Divisional Offices.

--Chancellor's Office includes University Relations, Alumni Relations, and Fund Development.

--Student Services includes the Vice Chancellor's Office, Admissions, Financial Aid, Counseling, Career Center, Health Service, Residential Life office staff, Student Activities, and Minority Student Program. Residential Life custodial staff are shown under Auxiliary Enterprises.

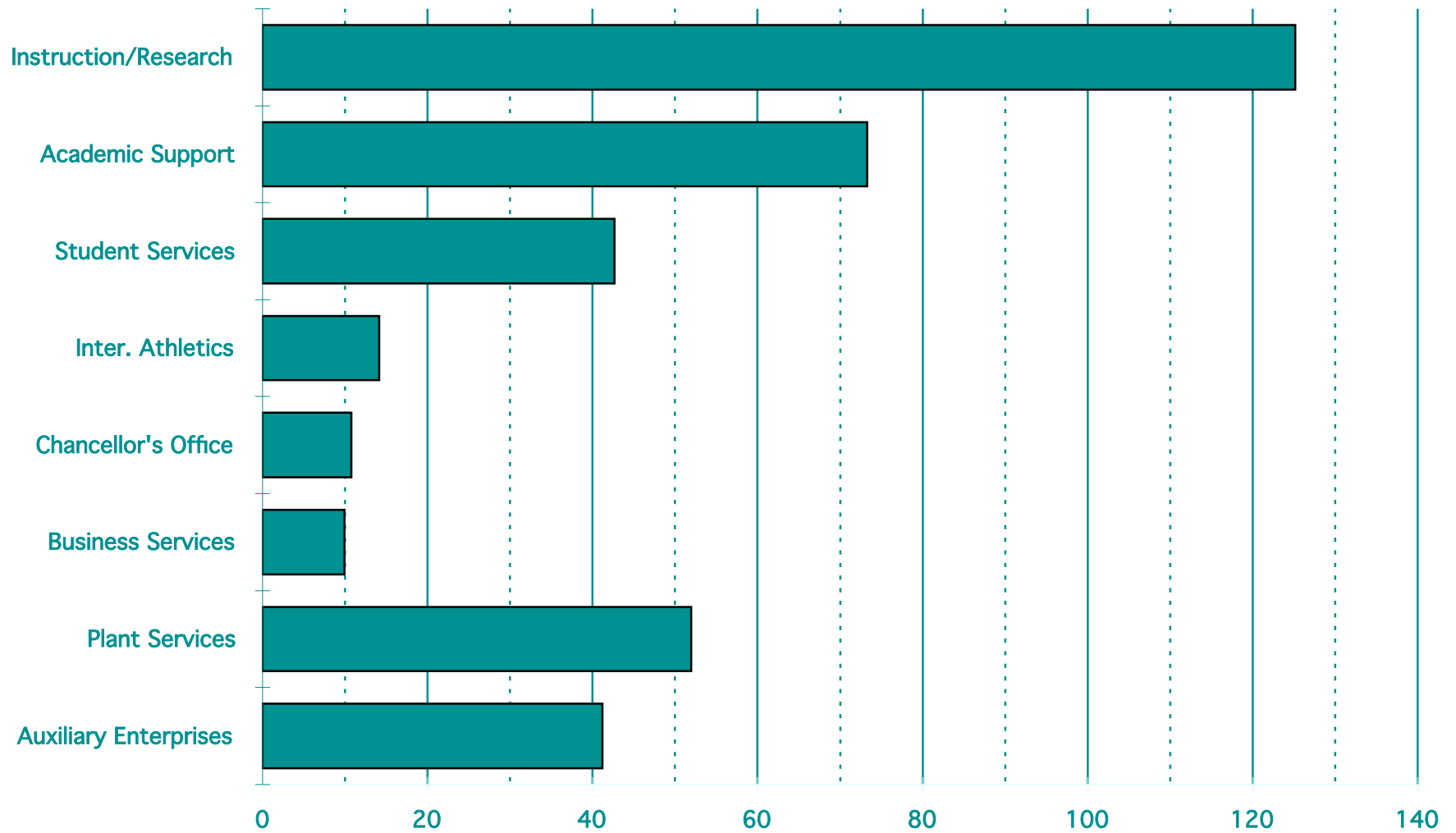
--Business Services includes the Finance & Administration Office and Business Office. Food Services and the Bookstore are shown under Auxiliary Enterprises.

--Plant Services includes the Post Office, Campus Security, Planning, Telephone, General and Custodial Maintenance, Building Trades, Grounds, and Transportation. Duplicating and Vending are shown under Auxiliary Enterprises.

--Auxiliary Enterprises includes Food Service, Vending, Duplicating, Bookstore, and Residential Life custodial staff.

--Does not include faculty leave replacements, student employment, part-time faculty or staff employed less than 25% time.

Distribution of Faculty/Staff for 2003-2004



University of Minnesota, Morris
A Five-Year Summary of the Academic, Civil Service, and Bargaining Unit Staffing
by Occupational Classification
for 1999-2004

Staffing by Class. 1999-04

Classification	1999-00	2000-01	2001-02	2002-03	2003-04
Teaching Faculty	122.5	128.3	128.7	133.6	132.2
Executive Management	6.0	5.7	6.0	6.0	6.0
Support Professionals	49.2	50.0	55.0	55.9	58.6
Technical Employees	23.8	20.5	20.7	21.8	21.3
Office/Clerical	76.4	78.4	77.8	76.7	82.6
Crafts/Trades	18.2	18.2	18.2	18.5	17.0
Service Employees	51.2	50.4	53.4	54.4	51.4
Total	347.2	351.4	359.7	366.9	369.0

Most temporary and continuing part-time employees are counted on a percentage basis (faculty on leave are counted but not their replacements). Beginning with 2003-04, Continuing Education employees are counted in the UMM staff total.

Definitions:

- Teaching Faculty includes instructional faculty and Division Chairs.
- Executive Management includes the Chancellor and Vice Chancellors.
- Support Professionals include Student Services Directors, librarians, Computing Services Director, police, nurse, trainer, etc.
- Technical includes junior engineer, landscape supervisor, computer programmers, electronic technicians, etc.
- Office and Clerical includes clerical and office supervisory staff and assistant administrators.
- Crafts and Trades includes bargaining unit staff in skilled trades such as carpenters, electricians, plumbers, heating plant engineers, etc.
- Service includes primarily bargaining unit staff in custodial and food service positions.

